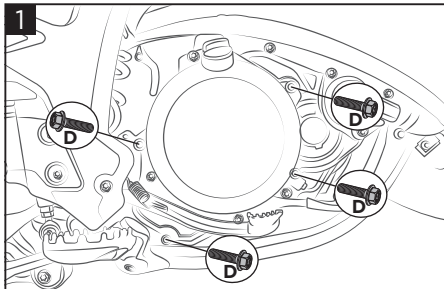
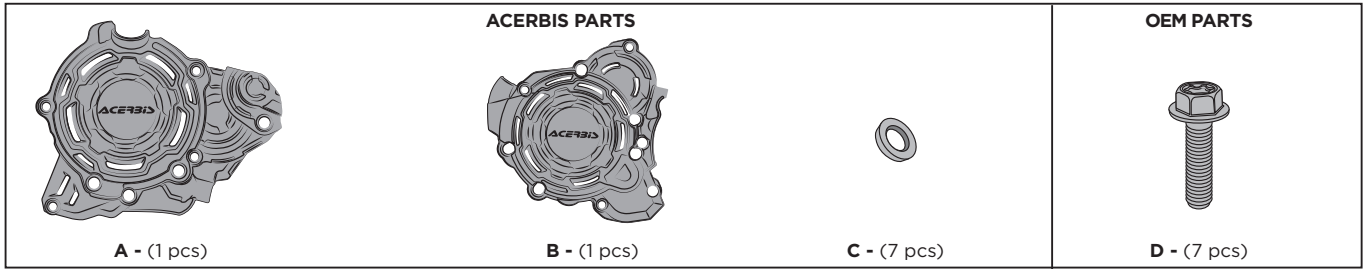


ACERBIS

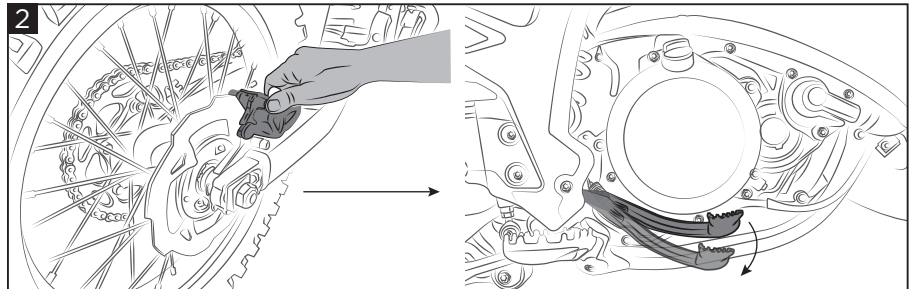
CLUTCH/IGNITION X-POWER KTM-HUSQVARNA 250 2023

PROTEZIONE FRIZIONE/ACCENSIONE X-POWER KTM-HUSQVARNA 250 2023

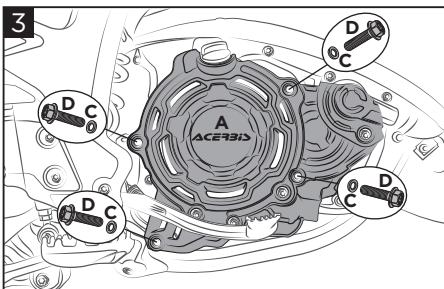
COD. 500008848



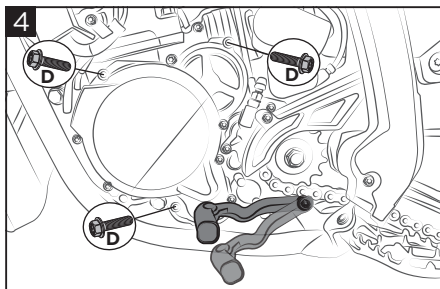
1
Remove the original screws (D) shown in figure.
Rimuovere le viti originali (D) indicate in figura.



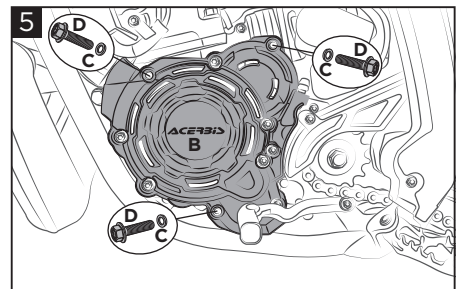
2
To simplify the X-Power mounting, push the brake caliper inward and widen the brake pads, then push the brake pedal down. Finally, place the protection on the engine casing.
Per facilitare il montaggio del X-Power, premere la pinza allargando le pastiglie e poi abbassare il freno. Infine appoggiare la protezione sul carter motore.



3
Mount the X-Power clutch protection (A) with the original screws (D) and bushings (C). Closing torque as reported on the original instructions manual of the bike. Pull the brake lever several times, until the pads are returned to the original position.
Montare la protezione frizione X-Power (A) con le viti originali (D) e le boccole (C). Coppia di chiusura come riportato sul manuale originale della moto. Premere la leva freno più volte fino a riportare le pastiglie nella posizione originale.



4
Lower the gear shift by putting the bike into the first gear and remove the original screws (D) as shown in figure. Place the protection on the engine casing.
Abbassare la leva del cambio (inserendo la 1° marcia) e rimuovere le viti originali (D) come indicato in figura. Appoggiare la protezione sul carter motore.



5
Mount the X-Power ignition protection (B) with the original screws (D), and the bushings (C). Closing torque as reported on the original instructions manual of the bike.
Montare la protezione accensione X-Power (B) con le viti originali (D) e le boccole (C). Coppia di chiusura come riportato sul manuale originale della moto.

WARNING!

Use Acerbis' products at your own risk. Check the safety of your device before you ride. Be sure that you follow the instructions for installing the Acerbis' products. Do not ride if there is missing or damaged hardware. If this is the case, take the item immediately back to your dealer. Make sure the throttle and other controls are free every time you ride. Not following these instructions and warnings could lead to interference with the controls, loss of control, and accidents. Acerbis recommends that installation must be done by a licensed mechanic and that only Acerbis' original parts are used during installation. Acerbis makes no guarantees or representations, express or implied, regarding the fitment of its product for any particular purpose. Acerbis makes no guarantees or representations, express or implied, regarding the extent to which its products protect individuals or property from injury or death or damage.

EUROPE

ACERBIS ITALIA S.P.A.
VIA SERIO, 37
24021 ALBINO (BG)
ITALY

U.S.A.

ACERBIS U.S.A. INC.
MAIL P.O. BOX 2030
SUN VALLEY, ID 83353
SHIP 110 LINDAY CIRCLE
KETCHUM, ID 83340
U.S.A.

UNITED KINGDOM

ACERBIS U.K LTD
UNIT 4 DUNFERMLINE COURT,
KINGSTON, MILTON KEYNES
MK10 0BY
GREAT BRITAIN